

2017-2018

Guide for
disabled
visitors

Accessible Paris



WWW ●
PARISINFO
● COM

PARIS
Convention
and Visitors Bureau



CONTENTS

WWW●
PARISINFO
●COM



For more information on all the subjects touched on in this brochure, visit the website www.parisinfo.com, rubric 'Practical Paris', subheading 'Visiting Paris with a disability'.

PARIS CONVENTION AND VISITORS BUREAU

25 rue des Pyramides Paris (1st)

Design: Graphéine/PCVB.

Written and produced by: PCVB.

Translation: D. Lindsay-McGeown.

Photogravure: RVB Éditions.

Printed by: Nord' Imprim.

October 2016.

Cover illustration: Vincent Mahé.

Photos: all rights reserved. PCVB:

M. Bertrand, A. Dupont, J. Lebar,

D. Lefranc, S. Sergent, D. Thierry.

Axsol. Buddha Bar/C. Madamour.

Bristol Paris/R. Balancourt. Centre

des Monuments Nationaux. Centre

Pompidou/M. Braun. Champeaux.

Château de Versailles/Onairda.

Cité de l'Architecture et du Patrimoine/

N. Borel (CAPA). District République/

M. Ledieu. Generator Paris/S. Serra.

Handynamic. Holiday Inn Paris Opéra

Grands Boulevards. Hôtel Basss/D-E.

Cohen. La Bellevilloise. Le Bus Direct/

Paris Aéroport. Les Docks - Cité de

la Mode et du Design/T. Vankemel.

Les Ombres/V. Leroux. Méridien Étoile.

Paris Aéroport/É. Luider. Philharmonie

de Paris/W. Beaucardet. RATP. RATP/B.

Marguerite. RATP/D. Sutton. Thinkstock.

p.4	Arriving in Paris
p.6	Getting around on public transport
p.8	Getting around by private transport
p.10	Staying in adapted places
p.14	Eating out in adapted places
p.16	Visiting museums and monuments
p.20	Outings in Paris
p.22	Entertainment and leisure in Paris
p.24	Making your trip easier
p.26	A promenade along the banks of the Seine



Large print or Braille (in French only) versions of this brochure are available at the main information point of the Paris Convention and Visitors Bureau (25 rue des Pyramides, Paris 1st; opening times and addresses of all information centres on p.24).



FOREWORD

Dear Traveller,


Paris is one of the cities that welcome the biggest number of tourists worldwide and we would like our exceptional architectural and cultural heritage, our renowned gastronomy, our numerous shops and our magnificent gardens to be accessible to everyone.

The Paris Tourist Office has designed this brochure to make it easier for you to visit Paris and its surroundings. In these pages, you will find the keys to planning your arrival here, getting around according to your specific needs, staying and eating in adapted establishments, and getting the most out of accessible activities.

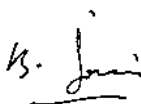
Whether you would like help in planning your trip to Paris, or you would like to rent medical equipment, benefit from preferential rates, locate adapted public toilets ... this guide provides you with all the necessary practical information for a smooth and serene visit to the French capital.

If you are getting around in a wheelchair, alone or with an accompanying person, this brochure offers you an adapted and comfortable tourism itinerary to discover the many aspects of Paris. It also lists a number of places to visit that are adapted to people who have a sensory or mental disability.

Enjoy your stay!



Jean-François Martins
Deputy Mayor of Paris
for Sport and Tourism



Bernard Jomier
Deputy Mayor of Paris
for Health, Disability and Relations with the Assistance
Publique – Hôpitaux de Paris (Paris Public Hospital System)



— ● ARRIVING IN PARIS

BY AIR

Before you leave: inform the air carrier of your requirements when you book, or at least 48 hours in advance. You must fill in an INCAD (Incapacitated Passengers Handling Advice) form and have it signed by your doctor, who will decide whether or not they can authorize your journey. For your safety, the airline company can insist that you be accompanied. If you travel with **Air France**, you can request the assistance you need online. You can also contact Saphir, the free booking assistance service for disabled travellers.

Service Saphir ☎ 09 69 36 72 77 ● mail.saphir@airfrance.fr

Information and contact details for Saphir from other countries on ● www.airfrance.fr, rubric Information/Preparing your trip/Passenger assistance

Paris Aéroport ensures that assistance is given to you from your arrival at Paris – Charles de Gaulle and Paris – Orly airports to your means of transport to Paris, as well as getting you seated on your return aircraft. Indicate your arrival, either via the telephone intercoms or at the check-in desks of your airline company.

Paris Aéroport ☎ 39 50 (€0.35/min) and +33 (0)1 70 36 39 50 from abroad ● www.parisaeroport.fr (contact form)

For travel between the airports and Paris, the shuttle coaches **Le Bus Direct Paris Aéroport** are available to all passengers. Vehicles and stops are accessible to people in wheelchairs.

Le Bus Direct Paris Aéroport ☎ 0810 81 20 01 (€0.12/min) ● www.lebusdirect.com (contact form)

BY TRAIN

The SNCF (French national railway company) makes travel easier for disabled people with its free **Accès Plus** service. This service at the station to meet and then accompany disabled passengers to and from their train must be booked at least 48 hours before departure.

Accès Plus ☎ 0890 64 06 50 (€0.12/min) and SMS on 06 10 64 06 50 (price of a text message), in SNCF stations and shops or ● accesplus@sncf.fr (in French only).

The improvement of facilities in **stations** is one of the priorities of the SNCF. Access facilities include: lifts; adapted toilet facilities, sound guidance system and podotactile bands and strips; magnetic loops; visible, readable and easily comprehensible signposting.



Trains can be boarded by a mobile ramp or a special lift apparatus, according to the distance between the platform and the train. On board, TGV trains have dedicated areas reserved for people in wheelchairs.

**FIND
OUT
MORE**



See all the services offered by the SNCF and its partners, and download or consult the *Guide mobilité réduite* (Reduced Mobility Guide), in French only, published by the SNCF, in interactive or audio version on www.accessibilite.sncf.com.

If you are travelling by **Eurostar**, arrive 45 minutes before the train departure time and speak to the staff, who will help you to board and alight from the train. If you are travelling by **Thalys**, contact them by telephone to make your request for assistance on:

- ☎ +32 (0)2 528 28 28 if your departure station is in Belgium (48 hrs before departure);
- ☎ +49 (0)180 6 512 512 if your departure station is in Germany (24 hrs before departure);
- ☎ +31 (0) 30 235 78 22 if your departure station is in the Netherlands (72 hrs before departure);
- ☎ +33 (0) 890 640 650 if your departure station is in France (48 hrs before departure).

On board, there are specifically designed seating areas and adapted toilet facilities.

BY CAR

If you are coming to Paris by car, we recommend that you use the motorways. The services offered to disabled people by the national road network are not equivalent to those offered by the motorway network, which has more rest areas and dedicated facilities. If you use the motorway and you are travelling in an adapted class 2 vehicle (van type), you are entitled to class 1 (saloon type) rate charges at motorway tolls. To benefit from this **lower rate**, you must use a lane with a member of staff, or use the intercom to call for assistance if the toll booth is an automatic one. Many **rest areas** are adapted for disabled people: reserved parking places, adapted shops and toilet facilities. At all service stations, you can ask to be served by a petrol pump attendant.

In the event of a breakdown or accident, if you are alone and the orange emergency phone is inaccessible, dial ☎ **112** (free) on your mobile phone.



● GETTING AROUND ON PUBLIC TRANSPORT

Getting around in the capital is simple and quick. The public transport network serving Paris and the Paris region is highly efficient. It includes an important bus network, several tramway lines and numerous metro lines linked to inter-urban express train (RERs) lines and to some Transilien (SNCF suburban trains) lines.

BY BUS

All Parisian bus lines are accessible: vehicles are equipped with a retractable access ramp and 90% of bus stops are adapted (raised pavement). Since 2010, all buses have audio and visual announcements to indicate the next stop on the route.

BY TRAM

The RATP's tramway lines were designed from the beginning to be accessible to all types of disability: all carriages have flat floors and are level with the platform, and visual information is also transmitted by a sound system.

BY METRO

Due to its widespread and comprehensive network, the metro is the preferred transport of Parisians and visitors. For safety, the platform edges of metro stations are lined with hazard warning strips, except for **lines 1, 13 and 14**, which are equipped with platform screen doors for optimal safety for sight-impaired people.

Carriages on lines 1, 4 and 14 have a sound system to announce the next station that the metro will stop at. In metro stations, the website www.metro-connexion.org gives detailed information on journeys that require a change of metro station (information in French).

For people with a hearing impairment, the next station is announced visually by a light signal on a map or on screens, **on lines 1, 2, 3, 9 and 13**.

Due to the age of their construction, **lines 1 to 13** are not adapted for people in wheelchairs. However, **the line 14**, the most recent one, is fully accessible to wheelchair users. It enables them to cross Paris from Saint-Lazare (9th) to Olympiades (13th).

BY RER AND TRANSILIEN

The RER, which is linked to the metro network in Paris, serves the Paris suburbs and its points of interest (Château de Versailles, Disneyland® Paris, etc.). Transilien trains complete the transport network in the suburbs.

90% of stations adapted to wheelchair users on the RER A and B have lifts and wider passageways at ticket validation points. A mobile ramp between the platform and train is put in place by a member of staff (who also alerts your arrival station) to ensure that trains are accessible.

If the station is an RATP one, you can contact a member of staff via the call points and intercoms located on platforms and near to ticket validation points.

If the station is an SNCF one, you must book the **Accès Plus Transilien** free service by telephone or by email, no later than the day before your journey.

Accès Plus Transilien ☎ 09 70 82 41 42, from 7am to 8pm 7/7 (non-surcharged call)

● accesplus@transilien-sncf.fr

To provide information on board trains, maps with visual and audio 'next stop' announcements are routinely installed in new carriages.



GOOD TO KNOW

Developed by the Syndicat des transports d'Île-de-France, the **Infomobi** service provides disabled people with useful information for getting around on public transport in Paris and the Paris region. It enables you to check, for example, the availability of lifts in stations.

Infomobi ● www.infomobi.com (in French and English) ☎ 09 70 81 83 85, from 7am to 10pm, 7/7 except 1 May (non-surcharged call)

The **RATP** has a special pricing rate only for disabled Parisians who are holders of the Carte Émeraude and for Paris region residents who are holders of the Carte Améthyste.

For more information on **RATP** special rates, visit the website ● www.ratp.fr



● GETTING AROUND BY PRIVATE TRANSPORT

BY TAXI



The **G7 taxi company's Access service** has a fleet of more than 120 vehicles adapted to people in wheelchairs. Drivers have received special training to ensure that physically-disabled and sight-impaired people are well taken care of.

To order a **G7 Access taxi** ☎ 01 47 39 00 91 ● www.g7.fr, 'Book a G7', or use the G7 Taxi application.

Service available 24/7, 365 days a year. Fares are the same as for a conventional taxi service, in accordance with the applicable prefectural price scale.

WITH A DRIVER OR WITH A HIRED VEHICLE

Companies specializing in transport on request for disabled people and/or in the rental of adapted vehicles are another solution for getting around Paris in an adapted vehicle driven by a certified driver.

ABS Handitransport ☎ 01 39 96 13 10 ● abshanditransport@orange.fr (with driver or rental vehicle only)

Allo Transport ☎ 01 83 84 00 84 ● contact@allotransport.fr (with driver)

ATAGH ☎ 01 40 05 12 15 ● association.atagh@gmail.com (with driver)

Ayde Handicap ☎ 06 81 91 15 15 ● ayde.handicap@gmail.com (with driver)

Eden Transports ☎ 01 40 27 08 58 ● contact@eden-transports.fr (with driver)

Epilobe ☎ 01 75 73 06 39 ● contact@epilobetransport.fr (with driver)

Handi Express ☎ 01 48 13 09 34 ● contact@handi-express.fr (with driver)

Handynamic ☎ 03 28 55 51 11 ● contact@handynamic.fr (rental vehicle only)

Koala Services ☎ 01 45 41 43 86 ● contact@koalaservices.fr (with driver)

Les Coccinelles ☎ 01 56 20 26 00 ● lescoccinelles.1@orange.fr (with driver)

Libellule Travel ☎ 01 53 31 31 31 ● libellule.travel11@yahoo.fr (with driver)

Mobilité Service Plus ☎ 06 89 17 88 24 ● contact.mobiliteservice.plus@gmail.com (with driver)

Ptitcar ☎ 09 83 20 01 69 ● contact@ptitcar.com (with driver or rental vehicle only)

Ulysse ☎ 0820 82 58 00 (€0.12/min) ● reseau@ulyse-transport.fr (with driver)

Vortex ☎ 01 69 64 54 00 ● evry@vortex.fr (with driver or rental vehicle only)

Other companies, like **Wheeliz**, are peer-to-peer rental companies for vehicle owners to rent out to each other vehicles that are adapted either for driving or for the transport of passengers.

More information on ● www.wheeliz.com

ON AN ELECTRIC SCOOTER

The following companies deliver and then pick up electric scooters for people with reduced mobility during their stay in Paris.

Axsol ☎ 01 76 78 19 59 ● location@axsol.fr

Mobility Scooter ☎ 01 83 65 00 40 ● contact@mobilityscooter.fr



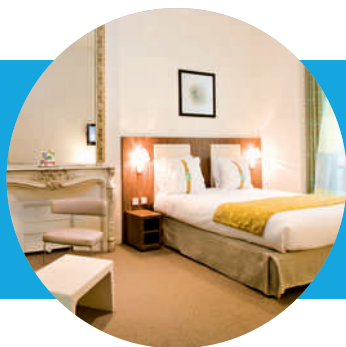
PARKING IN PARIS

If you are getting around in your car during your stay in Paris, then adapted parking places are reserved for disabled people on roads (free) and in municipal car parks. To use these, you must have the **European Parking Card** for disabled people, valid in all member countries of the European Union. If you are a non-European visitor, you can only use these if your country has the status of associate member of the European Conference of Ministers of Transport (**Australia, Canada, Japan, Mexico, New Zealand and South Korea, United States**) and if the logo 'wheelchair' and the name of the holder are shown on your parking card. Don't forget to display it clearly on the dashboard when you leave your vehicle.

FIND
OUT
MORE



Locate reserved parking places in Paris on ● www.prefecturedepolice.interieur.gouv.fr, (in French) rubric 'Vous aider', subheading 'Sécurité routière', file 'Stationnement' (map with pictograms).



— ● STAYING IN ADAPTED PLACES

Paris has an abundance of tourist accommodation with a variety of concepts and interior decor, and for all budgets. Many are adapted for disabled guests. Adapted facilities and devices include for example: ground level access, at least one adapted bedroom with bathroom equipped with floor-level shower and toilet with transfer bar, stairs with safety features, obstacles at face-height neutralized, lights linked to fire alarm sounder, easy-to-understand signposting. And of course, informed and attentive staff.

HOSTELS

More community orientated than hotels, hostels are open to all travellers looking for a more relaxed atmosphere and budget prices. A few addresses:

Generator Paris 📍 9-11 place du Colonel Fabien (10th) ☎ 01 70 98 84 00 ● paris@generatorhostels.com

St. Christopher's Inns – Gare du Nord 📍 5 rue de Dunkerque (10th) ☎ 01 70 08 52 22

● gdnreception@st-christophers.co.uk

Auberge de Jeunesse Paris – Yves Robert 📍 20 esplanade Nathalie Sarraute (18th) ☎ 01 40 38 87 90

● paris.yves-robert@hifrance.org

HOTELS

Below, you will find a selection of hotels designed to welcome you and listed according to rated category (please note that all Paris 5-stars are adapted). Good to know: more than **350 adapted hotels** are listed on ● www.parisinfo.com.

1 STAR

Solar Hôtel 📍 22 rue Boulard (14th) ☎ 01 43 21 08 20 ● contact@solarhotel.fr

2 STARS

District République 📍 4 rue Lucien Sampaix (10th) ☎ 01 42 08 20 09 ● contact@hoteldistrictrepublique.com

Hôtel du Printemps 📍 80 bd de Picpus (12th) ☎ 01 43 43 62 31 ● contact@hotel-paris-printemps.com

Hôtel du Quai de Seine 📍 3 passage de Flandre (19th) ☎ 01 40 34 76 88

● contact.hotelduquaideseine@bbox.fr

3 STARS

Hôtel Palais de Chaillot 📍 35 avenue Raymond Poincaré (16th) ☎ 01 53 70 09 09 ● resa@hpdc.fr
Source Hotel 📍 135 avenue de Saint-Ouen (17th) ☎ 01 46 27 73 67 ● www.sourcehotel.fr (contact form)
Hôtel Armoni 📍 7 villa Berthier (17th) ☎ 01 42 12 44 00 ● contact@hotelarmoniparis.com
Hôtel Basss 📍 57 rue des Abbesses (18th) ☎ 01 42 51 50 00 ● contact@hotel-basss.com
Hôtel Lumières 📍 110 rue Damrémont (18th) ☎ 01 42 64 25 75 ● contact@hotel-lumieres.com
Holiday Inn Express Paris – Canal de la Villette 📍 68 quai de la Seine (19th) ☎ 01 44 65 01 01
● exhi@hotels-res.com

4 STARS

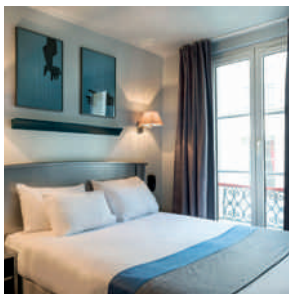
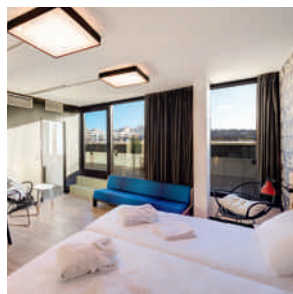
123 Sébastopol 📍 123 bd de Sébastopol (2nd) ☎ 01 40 39 61 23 ● www.le123sebastopol.com (contact form)
Seven Paris 📍 20 rue Berthollet (5th) ☎ 01 43 31 47 52 ● contact@sevenhotelparis.com
Hotel Best Western Premier Le Swann 📍 11-15 rue de Constantinople (8th) ☎ 01 45 22 80 80
● reservation@hotel-leswann.com
Holiday Inn Paris Opéra Grands Boulevards 📍 30-32 bd Poissonnière (9th) ☎ 01 47 70 25 55
● reception@hiopera.com
Crowne Plaza Paris République 📍 10 place de la République (11th) ☎ 01 43 14 43 50
● reservations@pardl.crowneplaza.com
Suite Novotel Paris Porte de la Chapelle 📍 1 impasse Marteau (18th) ☎ 01 49 46 39 39 ● h4983@accor.com

5 STARS

Le Cinq Codet 📍 5 rue Louis Codet (7th) ☎ 01 53 85 15 60 ● contact@le5codet.com
Buddha-Bar Hotel Paris 📍 4-8 rue d'Anjou (8th) ☎ 01 83 96 88 88 ● reservations@bbhparis.com
Hôtel Barrière Le Fouquet's Paris 📍 46 avenue George V (8th) ☎ 09 70 80 91 11 ● www.hotelsbarriere.com (contact form)
Sofitel Paris Arc de Triomphe 📍 14 rue Beaujon (8th) ☎ 01 53 89 50 50 ● h1296@sofitel.com

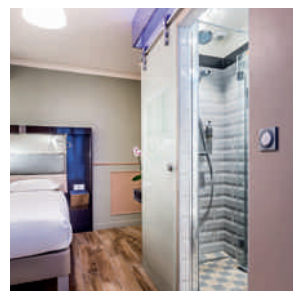
5 STARS WITH THE 'PALACE' DISTINCTION

Le Meurice 📍 228 rue de Rivoli (1st) ☎ 01 44 58 10 10 ● reservations.lmp@dorchestercollection.com
Le Bristol Paris 📍 112 rue du Faubourg Saint-Honoré (8th) ☎ 01 53 43 43 00 ● reservation@lebristolparis.com
Shangri-La Hotel Paris 📍 10 avenue d'Iéna (16th) ☎ 01 53 67 19 98 ● slpr@shangri-la.com



Due to heritage and/or overriding technical constraints, several hotels are exempt from the rules of accessibility for people with a motor disability. Consequently, some hotels (like the Hôtel Brittany), have given particular attention to facilities for people with a sensorial disability.

Hôtel Brittany*** 📍 3-5 rue Saint-Lazare (9th) ☎ 01 48 78 44 50 ● resa@hotel-brittany.net



ACCOMMODATION FOR GROUPS



Some tourist accommodation offers a large number of adapted rooms. The following establishments all have **a minimum of 8 adapted rooms**, designed to welcome groups in the best conditions.

FIAP Jean Monnet 📍 30 rue Cabanis (14th) ☎ 01 43 13 17 00

● fiap@fiap-paris.org

Résidence Internationale de Paris 📍 44 rue Louis Lumière (20th)

☎ 01 40 31 45 45 ● info@ee-rip.com

F1 Paris Porte de Châtillon* 📍 21-23 avenue de la porte de Châtillon (14th)

☎ 0891 70 52 29 ● h5010@accor.com

F1 Porte de Montmartre* 📍 29 rue du docteur Babinski (18th) ☎ 0891 70 53 50 ● h2539-re@accor.com

Timhotel Berthier Paris 17*** 📍 4 bd Berthier (17th) ☎ 01 46 27 10 00 ● resaind.berthier@timhotel.fr

Campanile Paris La Villette*** 📍 147-151 avenue de Flandre (19th) ☎ 01 44 72 46 46

● paris.lavillette@campanile.fr

Intercontinental Paris Le Grand**** 📍 2 rue Scribe (9th) ☎ 01 40 07 32 32 ● legrand.reservation@ihg.com

Pullman Paris Centre Bercy**** 📍 1 rue de Libourne (12th) ☎ 01 44 67 34 00 ● h2192@accor.com

Hôtel Catalogne Paris Gare Montparnasse**** 📍 40 rue du Commandant Mouchotte (14th)

☎ 01 56 54 84 00 ● montparnasse-sales@concorde-hotels.com

Mercure Paris Centre Tour Eiffel**** 📍 20 rue Jean Rey (15th) ☎ 0825 80 17 17 ● h2175@accor.com

Novotel Paris Centre Tour Eiffel**** 📍 61 quai de Grenelle (15th) ☎ 01 40 58 20 00 ● h3546@accor.com

Pullman Paris Tour Eiffel**** 📍 18 avenue de Suffren (15th) ☎ 01 44 38 56 00 ● h7229@accor.com

Le Méridien Étoile**** 📍 81 bd Gouvion Saint-Cyr (17th) ☎ 01 40 68 34 34 ● guest.etoile@lemeridien.com

ON THE OUTSKIRTS OF PARIS

More recent and with less patrimonial constraints than Parisian hotels, all the establishments in the areas of the **Paris – Charles de Gaulle** and **Paris – Orly airports**, and the business area of **La Défense**, **Disneyland® Paris** and the **Stade de France** are adapted for people with disabilities. In Versailles, close to the famous palace, there are notably:

Hôtel Ibis Versailles Château*** 📍 4 avenue du Général de Gaulle – Versailles (78) ☎ 01 39 53 03 30

● h1409@accor.com

Hôtel La Résidence du Berry*** 📍 14 rue d'Anjou – Versailles (78) ☎ 01 39 49 07 07 ● resa@hotel-berry.com

Novotel Château de Versailles**** 📍 4 bd Saint-Antoine – Le Chesnay (78) ☎ 01 39 54 96 96

● h1022@accor.com

FIND
OUT
MORE



To select your accommodation, we invite you to use the advanced search option on
● www.parisinfo.com, rubric 'Where to stay'. Choose the criteria that interest you:
location, services, rating and type of disability.

DO YOU KNOW THE FRENCH STATE APPROVED QUALITY RATING 'TOURISME & HANDICAP'?



Since 2001, the **Tourisme & Handicap** State quality rating is a guarantee of an accessible building and an efficient and adapted welcome. The list of establishments likely to have

this mark is huge: hotels, B&Bs, restaurants, monuments, museums, theme parks, concert halls, etc. As the mark is not automatically attributed for all 4 major types of disability together (hearing, mental, physical and visual), check the pictograms well that indicate those for which the establishment has the mark.

On ● www.parisinfo.com you can consult the list of accommodation, restaurants, or cultural sites that have been attributed the mark in Paris and the Paris region, by using the advanced search in the rubrics 'Where to stay', 'Eating out', 'What to see' and 'Going out' and by clicking on 'Tourisme & Handicap' (according to your type of disability).



— • EATING OUT IN ADAPTED PLACES

Paris, the capital of gastronomy, invites visitors from all over the world to come and enjoy its cuisine. The variety of types of cooking is equalled only by the decoration, and every district is full of great places to eat. As for tourism accommodation, more and more Parisian restaurants are offering facilities and a service adapted to the needs of customers with disabilities.

BRASSERIES

For a particularly Parisian atmosphere, eat out at a classic brasserie.

Brasserie Gallopin 📍 40 rue Notre-Dame-des-Victoires (2nd) ☎️ 01 42 36 45 38 • contact@gallopin.com

Bouillon Racine 📍 3 rue Racine (6th) ☎️ 01 44 32 15 60 • www.bouillon-racine.com (contact form)

Brasserie Printemps 📍 Printemps Mode 6th floor (9th) ☎️ 01 42 82 58 84

RESTAURANTS

Champeaux 📍 Forum des Halles La Canopée (1st) ☎️ 01 53 45 84 50 • www.restaurant-champeaux.com (contact form)

Madeleine 7 📍 7 bd de la Madeleine (1st) ☎️ 01 42 61 10 35 • www.madeleine7.fr (contact form)

Bistrot d'Edmond 📍 23 rue du 4 Septembre (2nd) ☎️ 01 85 08 58 25 • www.bistrotedmond.fr (contact form)

Étienne Marcel 📍 64 rue Tiquetonne (2nd) ☎️ 01 45 08 01 03 • reservation@beaumarly.com

Le Georges 📍 Centre Pompidou (4th) ☎️ 01 44 78 47 99 • commercial@beaumarly.com

Lucernaire 📍 53 rue Notre-Dame-des-Champs (6th) ☎️ 01 45 48 91 10 • restaurant@lucernaire.fr

Café Branly 📍 Musée du quai Branly – Jacques Chirac (7th) ☎️ 01 47 53 68 01

Le Faust 📍 Pont Alexandre III (7th) ☎️ 01 44 18 60 60 • reservations@faustparis.fr

Les Ombres 📍 Musée du quai Branly – Jacques Chirac (7th) ☎️ 01 47 53 68 00

• www.lesombres-restaurant.com (online booking)

Restaurant du musée d'Orsay 📍 Musée d'Orsay (7th) ☎️ 01 45 49 47 03 • restaurant.orsay.rv@areas.com

Buddha-Bar 📍 8-12 rue Boissy d'Anglas (8th) ☎️ 01 53 05 90 00 • accueil@buddhabar.com

Le Dix 📍 10 place de la République (11th) ☎️ 01 43 14 44 08

Chai 33 📍 33 cours Saint-Émilion – Bercy Village (12th) ☎️ 01 53 44 01 01 • info@chai33.com

Panasia 📍 Beaugrenelle Paris (15th) ☎️ 01 45 75 16 33 • beaugrenelle@panasia.fr

Le Stella 📍 133 avenue Victor Hugo (16th) ☎️ 01 56 90 56 00

Restaurant Les Arts 📍 9 bis avenue d'Iéna (16th) ☎️ 01 40 69 27 53 • restaurant.am@sodexo-prestige.fr

Tokyo Eat 📍 Palais de Tokyo – 13 avenue du Président Wilson (16th) ☎ 01 47 20 00 29

● tokyoeat@palaisdetokyo.com

Café des concerts 📍 213 avenue Jean Jaurès (19th) ☎ 01 42 49 74 74 ● resa@cafedesconcerts.com

Mama Shelter 📍 109 rue de Bagnole (20th) ☎ 01 43 48 45 45 ● food.paris@mamashelter.com

UNUSUAL RESTAURANTS

As its name indicates, the restaurant Dans le Noir ? suggests that you enjoy your meal ... in the dark! Meals are served by blind people. An experience that is both original and delicious.

Dans le Noir ? 📍 51 rue Quincampoix (4th) ☎ 01 42 77 98 04 ● www.paris.danslenoir.com (contact form)

Having a meal at a height of 58 metres at one of Paris's most iconic tourist attractions in Paris is possible at 58 Tour Eiffel.

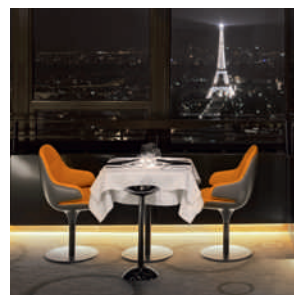
58 Tour Eiffel 📍 1st floor of the Eiffel Tower (7th) ● www.restaurants-toureiffel.com (online booking)

GROUPS

If you are in a group, the 'Restaurants du Monde Carrousel du Louvre' catering area offers fast food on the theme of world flavours, in a totally accessible shopping centre, right in the heart of Paris.

Restaurants du Monde 📍 Carrousel du Louvre – 99 rue de Rivoli (1st) ☎ 01 55 35 12 60

● www.restaurantsdumonde.fr (contact form)



FIND
OUT
MORE



Just as for accommodation, to find a restaurant to suit you, we advise you to use the advanced search on ● www.parisinfo.com (rubric 'Eating out') and the criteria suggested to make your selection (including disability).



— • VISITING MUSEUMS AND MONUMENTS

Whether you are passionate about history and ancient stone buildings or a fan of contemporary art, you will certainly find a museum or monument in Paris to interest you. As well as providing accessibility for wheelchair users, more and more cultural establishments are offering adapted tours for visitors with sensorial or mental disabilities. The following lists are non-exhaustive. We recommend that you contact the place in advance of your visit to check that the service offered is compatible with your needs.

ESTABLISHMENTS ACCESSIBLE TO PEOPLE IN WHEELCHAIRS AND OFFERING ADAPTED TOURS FOR PEOPLE WITH SENSORIAL OR MENTAL DISABILITIES

Basilique cathédrale de Saint-Denis 📍 1 rue de la Légion d'Honneur – Saint-Denis (93) ☎ 01 48 09 83 54

• basilique-saint-denis@monuments-nationaux.fr

Centre Pompidou 📍 Place Georges Pompidou (4th) • www.handicap.centrepompidou.fr (contact form)

Château de Versailles (partially) 📍 Place d'Armes – Versailles (78) ☎ 01 30 83 75 05

• versaillespourtous@chateaudeversailles.fr

Château de Vincennes (partially) 📍 Avenue de Paris – Vincennes (94) ☎ 01 48 08 31 20 or 01 43 28 15 48

Cinémathèque française 📍 51 rue de Bercy (12th) ☎ 01 71 19 33 33 • www.cinematheque.fr (contact form)

Cité de l'Architecture et du Patrimoine 📍 1 place du Trocadéro (16th) ☎ 01 58 51 52 00

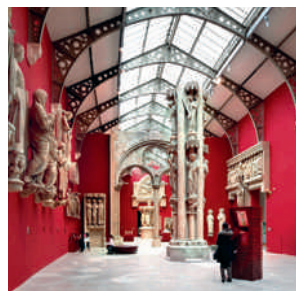
• www.citechaillot.fr (contact form)

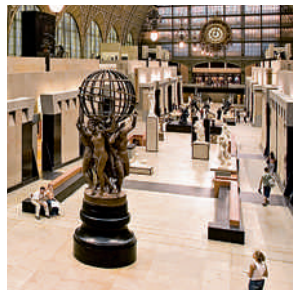
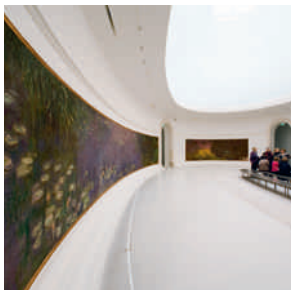
Cité des Sciences et de l'Industrie 📍 30 avenue Corentin Cariou (19th) ☎ 01 40 05 70 86

• info.handicap@universcience.fr

Fondation Louis Vuitton 📍 Bois de Boulogne – 8 avenue du Mahatma Gandhi (16th) ☎ 01 40 69 96 00

• contact@fondationlouisvuitton.fr





Maison de Victor Hugo 📍 6 place des Vosges (4th) ☎ 01 42 72 10 16 ● www.maisonsvictorhugo.paris.fr (contact form)

Musée d'Art et d'Histoire du Judaïsme 📍 71 rue du Temple (3rd) ☎ 01 53 01 86 62 ● accessibilite@mahj.org

Musée d'Orsay 📍 1 rue de la Légion d'Honneur (7th) ☎ 01 40 49 48 14 ● www.musee-orsay.fr (contact form)

Musée de l'Air et de l'Espace 📍 Aéroport de Paris – Le Bourget – Le Bourget (93) ☎ 01 49 92 70 00
● www.museeairespace.fr (contact form)

Musée de l'Orangerie 📍 Jardin des Tuileries (1st) ☎ 01 44 50 43 37
● accessibilite-orangerie@musee-orangerie.fr

Musée des Arts asiatiques Guimet 📍 6 place d'Iéna (16th) ☎ 01 56 52 53 00 ● contact@guimet.fr

Musée des Arts et Métiers 📍 60 rue Réaumur (3rd) ☎ 01 53 01 82 89 ● www.arts-et-metiers.net (contact form)

Musée du Louvre 📍 Main entrance via the Pyramide (1st) ☎ 01 40 20 59 90 ● handicap@louvre.fr

Musée du quai Branly – Jacques Chirac 📍 37 quai Branly (7th) ☎ 01 56 61 70 00
● accessibilite@quaibrantly.fr

Musée National de la Renaissance – Château d'Écouen 📍 Rue Jean Bullant – Écouen (95)
☎ 01 34 38 38 50 ● accueil.musee-rennaissance@culture.gouv.fr

Musée National Picasso Paris 📍 5 rue de Thorigny (3rd) ● accessibilite@museepicassoparis.fr

Musée Nissim de Camondo – Les Arts Décoratifs (ground floor) 📍 63 rue de Monceau (8th)
☎ 01 53 89 06 50 ● adac@lesartsdecoratifs.fr

Musée Rodin 📍 79 rue de Varenne (7th) ☎ 01 44 18 61 85 ● bouillo@musee-rodin.fr

Musée Zadkine 📍 100 bis rue d'Assas (6th) ☎ 01 55 42 77 20 ● musee.zadkine@paris.fr

Muséum National d'Histoire Naturelle – Gallery of Evolution and Children's Gallery

📍 36 rue Geoffroy Saint-Hilaire (5th) ☎ 01 40 79 54 79 ● handicap@mnhn.fr

Palais Galliera – Musée de la Mode de la Ville de Paris 📍 10 avenue Pierre I^{er} de Serbie (16th)
☎ 01 56 52 86 00 ● www.palaisgalliera.paris.fr (contact form)

Philharmonie de Paris 📍 221 avenue Jean Jaurès (19th) ☎ 01 44 84 44 84 ● handicap@philharmoniedeparis.fr

Sainte-Chapelle 📍 8 bd du Palais (1st) ☎ 01 53 40 60 93 ● beatrice.de-parseval@monuments-nationaux.fr

Sèvres – Cité de la Céramique 📍 2 place de la Manufacture – Sèvres (92) ☎ 01 46 29 22 00
● info@sevrescitereceramique.fr

ESTABLISHMENTS ACCESSIBLE TO PEOPLE IN WHEELCHAIRS AND OFFERING ADAPTED TOURS FOR PEOPLE WITH HEARING (H), MENTAL (M) OR VISUAL (V) DISABILITIES

Archaeological crypt of the parvis Notre-Dame (H and V; except the area of the old port)

📍 7 parvis Notre-Dame – Place Jean-Paul II (4th) ☎ 01 55 42 50 10 ● www.crypte.paris.fr (contact form)

Cathedral of Notre-Dame de Paris (H and M; towers inaccessible) 📍 6 parvis Notre-Dame – Place Jean-Paul II (4th) ☎ 01 42 34 56 10 ● www.notredamedeparis.fr (contact form)



Château de Fontainebleau (partially, H and V) 📍 Fontainebleau (77) ☎ 01 60 71 50 75 ● reservation@chateaufontainebleau.fr

Grand Palais (H and V) 📍 Avenue du Général Eisenhower - Avenue Winston Churchill (8th) ☎ 01 44 13 17 17 ● information.gngp@rmn.fr

Musée des Impressionnismes Giverny (H and V) 📍 99 rue Claude Monet – Giverny (27) ☎ 02 32 51 94 65 ● contact@mdig.fr

Musée National de la Marine (H and V) 📍 17 place du Trocadéro (16th) ☎ 01 53 65 69 53 ● reservation@musee-marine.fr

Palais de Tokyo (H and V) 📍 13 avenue du Président Wilson (16th) ☎ 01 81 97 35 88 ● accueil@palaisdetokyo.com

ESTABLISHMENTS ACCESSIBLE TO PEOPLE IN WHEELCHAIRS



Art Ludique – Le Musée 📍 34 quai d'Austerlitz (13th) ☎ 01 45 70 09 49 ● info@artludique.com

Basilique du Sacré-Cœur 📍 35 rue du Chevalier de la Barre (18th) ☎ 01 53 41 89 00

Château de Chantilly (partially) 📍 Chantilly (60) ☎ 03 44 27 31 80 ● reservations@domainedechantilly.com

Eiffel Tower (1st and 2nd floors) 📍 5 avenue Anatole France – Champ de Mars (7th) ☎ 0892 70 12 39 (€0.35/min)

Fondation Cartier pour l'art contemporain 📍 261 bd Raspail (14th) ☎ 01 42 18 56 50 ● info.reservation@fondation.cartier.com

Grévin Paris 📍 10 bd Montmartre (9th) ☎ 01 47 70 85 05 ● contact@grevin.com

Institut du Monde Arabe 📍 1 rue des Fossés Saint-Bernard – Place Mohammed V (5th) ☎ 01 40 51 38 38 ● www.imarabe.org (contact form)

Maison Rouge 📍 10 bd de la Bastille (12th) ☎ 01 40 01 08 81 ● info@lamaisonrouge.org

Mémorial de la Shoah 📍 17 rue Geoffroy l'Asnier (4th) ☎ 01 42 77 44 72 ● contact@memorialdelashoah.org

Musée du Vin 📍 5 square Charles Dickens (16th) ☎ 01 45 25 70 89 ● info@museeduvinparis.com

Musée National de l'Histoire de l'Immigration 📍 293 avenue Daumesnil (12th) ☎ 01 53 59 58 60 ● info@palais-portedoree.fr

Musée National Eugène Delacroix 📍 6 rue de Furstenberg (6th) ☎ 01 44 41 86 50 ● www.musee-delacroix.fr (contact form)

Palais Garnier 📍 Place de l'Opéra (9th) ☎ 0892 89 90 90 (€0.35/min) for visits; ☎ 01 40 01 18 50 or ● accessibilite@operadeparis.fr for performances (also with audio description)

ESTABLISHMENTS NOT ACCESSIBLE TO PEOPLE IN WHEELCHAIRS BUT WHICH OFFER TOURS ADAPTED TO PEOPLE WITH HEARING (H), VISUAL (V) OR MENTAL (M) DISABILITIES

Arc de Triomphe (H and M) 📍 Place Charles de Gaulle (8th) ☎ 01 55 37 73 77

● www.paris-arc-de-triomphe.fr (contact form)

Chapelle Expiatoire (H, M and V) 📍 29 rue Pasquier (8th) ☎ 01 42 65 35 80

● www.chapelle-expiatoire-paris.fr (contact form)

Château de Champs-sur-Marne (H, M and V) 📍 31 rue de Paris – Champs-sur-Marne (77) ☎ 01 60 05 24 43

● www.chateau-champs-sur-marne.fr (contact form)

Château de Maisons-Laffitte (H, M and V) 📍 2 avenue Carnot – Maisons-Laffitte (78) ☎ 01 39 62 01 49

● www.chateau-maisons.fr (contact form)

Conciergerie (H, M and V) 📍 2 bd du Palais (1st) ☎ 01 53 40 60 80 ● www.paris-conciergerie.fr (contact form)

Musée de Cluny – Le monde médiéval (H and V) 📍 6 place Paul Painlevé (5th) ☎ 01 53 73 78 00

● contact.musee-moyenage@culture.gouv.fr

Musée de la Poupée (H and M) 📍 Impasse Berthaud (3rd) ☎ 01 42 72 73 11 ● www.museedelapoupee.paris.com (contact form)

Panthéon (H, M and V) 📍 Place du Panthéon (5th) ☎ 01 44 32 18 00 ● www.paris-pantheon.fr (contact form)



FREE ADMISSION AND REDUCTIONS

Each cultural or leisure venue is free to decide its own policy in terms of free admission, reductions, and priority access for disabled people and the person accompanying them.

Where admission is free or where there is a reduction, **documentary evidence** may be requested, such as a European Parking Card, a disability document issued by your country, or a medical certificate (preferably written in French or in English) dated within 3 months of the time of your visit.

FIND
OUT
MORE



To select the place that you wish to visit, we invite you to use the advanced search option on ● www.parisinfo.com, rubric 'What to see'. Choose the criteria that interest you: location, services, type of disability.



— ● OUTINGS IN PARIS

Feel like going on a cruise, a coach tour or a mini-train ride? There are plenty of ideas for sightseeing trips in the capital.

BOAT TRIPS ON THE SEINE

Admire the majority of Paris's top monuments from the River Seine: the Eiffel Tower, the Grand Palais, the Orsay and Louvre museums, Notre-Dame Cathedral, the Hôtel de Ville (City Hall) ...

Bateaux-Mouches 📍 Port de la Conférence – Pont de l'Alma – Rive droite (8th) ☎ 01 42 25 96 10

● info@bateaux-mouches.fr

Pier with adapted toilet facilities; boats with removable ramp, accessible to all types of mobility devices (including scooters for people with reduced mobility); group of people in wheelchairs possible.

Bateaux Parisiens 📍 Port de la Bourdonnais (7th) ☎ 0825 01 01 01 (€0.15/min)

● www.bateauxparisiens.com (contact form)

Pier Port de la Bourdonnais with adapted toilet facilities; boats *Pierre Bellon*, *Juliette Gréco* and *Brigitte Bardot* with ground-level access and adapted toilet facilities; audio guides available on the *Pierre Bellon* compatible with magnetic loop hearing aids.

Vedettes de Paris 📍 Port de Suffren (7th) ☎ 01 44 18 19 50 ● billetterie@vedettesdeparis.com

Pier with adapted toilet facilities; boats accessible to people in manual wheelchairs able to transfer with an accompanying person; *Paris Étoile*, *Paris Léna* and *Paris Trocadéro* boats equipped with adapted toilet facilities.

GUIDED TRIPS IN PARIS

BY BUS

Big Bus Paris 📍 17 quai de Grenelle (15th) ☎ 01 53 95 39 53 ● infoparis@bigbustours.com

A part of the bus fleet is equipped with an access ramp and a reserved place on the lower deck.

Foxity 📍 3 rue de la Chaussée d'Antin (9th) ☎ 01 40 17 09 22 ● info@foxity.fr

All buses are equipped with an access ramp and a reserved place on the lower deck.

L'Open Tour 📍 13 rue Auber (9th) ☎ 01 42 66 56 56 ● information@parislopentour.com

A part of the bus fleet on the 'orange' and 'green' lines is equipped with an access ramp and a reserved place on the lower deck.

BY LITTLE TRAIN

Another Paris – Le petit train bleu 📍 Rue de l'Amiral de Coligny (1st) or 9 rue Lagrange (5th) according to the itinerary chosen 📞 06 31 99 29 38 • accessibilite@another-paris.com

Another Paris has obtained the State approved quality rating Tourisme & Handicap for the four disability categories.

ON FOOT

Contact the following tour guides and greeters and tell them your requirements.

Art.Cadia 📞 06 77 85 95 51 • art.cadia@live.fr

Avec les yeux de Julie 📞 06 61 77 13 21 • aveclesyeuxdejulie@gmail.com

Bleu comme une orange 📞 01 42 28 17 15 • bcuo@orange.fr

Comprendre Paris en marchant 📞 06 07 59 55 58 • comprendreparisenmarchant@gmail.com

DépauX Danielle 📞 06 42 68 99 55 • danielle.depauX@orange.fr

Flashguide-Paris 📞 06 07 99 49 13 • flashguide.paris@yahoo.fr

Les PEP 75 📞 01 47 34 00 10 • contact@pep75.org

Paris est une scène 📞 06 88 57 85 31

Paris on Wheels 📞 06 68 23 74 38 • derek@parisonwheels.com

Paris-visiteguidee 📞 06 76 66 73 81 or 06 32 25 68 26 • www.paris-visiteguidee.fr (contact form)

Parisien d'un jour • www.greeters.paris (contact form)

Veronica Antonelli 📞 06 21 72 90 85 • verantonelli@me.com

With' Art 📞 06 30 25 17 92 • withart.paris@gmail.com

SOMETHING DIFFERENT: GET UP IN THE AIR

Enjoy a unique experience by climbing aboard the biggest air balloon in the world and admiring Paris from a height of 150 m. As the Generali balloon rides are subject to meteorological conditions, it is best to book on the same day.

Ballon Generali 📍 Parc André Citroën – 2 rue de la Montagne de la Fage (15th) 📞 01 44 26 20 00

• aeroparis@aerophile.com

OUTINGS IN PARKS AND GARDENS



With some **450 green spaces**, Paris is a great place for a relaxing stroll. Choose your style of park or garden: French-style at the Tuileries Gardens (1st) or Luxembourg Gardens (6th), English-style at the Parc des Buttes Chaumont (19th), Parc Montsouris (14th) or Parc Monceau (17th), or Japanese at the Parc de Bercy (12th). Visitors in wheelchairs: we advise you to be accompanied as some surfaces are soft or have big differences in level. At several metres above the streets, the Coulée verte René Dumont (12th) is a green itinerary more than 4.5 km in length on a former converted railway track. Wheelchair access via rue Jacques Hillairet.



— ● ENTERTAINMENT AND LEISURE IN PARIS

Difficult to get bored in Paris! In addition to its rich heritage and many museums, the capital offers you an outstanding range of shopping and entertainment ...

THEATRES, CINEMAS, CABARETS

The **Accès Culture** service enables people with visual and hearing disabilities to discover adapted shows offered by more than 55 theatres in France. Search for an adapted show by disability or by show on ● www.accesculture.org.

In Paris, you are certain to find a film you like in one of the 87 cinemas. All foreign films are available in their original language version with subtitles in French. UGC and Gaumont Pathé cinemas also screen films in French with French subtitles.

The association **Ciné-ma différence** organizes film screenings for people who are autistic or who have associated behavioural disorders (in Paris: at Chaplin Denfert and Majestic Passy cinemas).

Ciné-ma différence ☎ 01 71 20 22 64 ● www.cinemadifference.com (contact form)

And Paris would not be Paris without its famous cabarets!

Crazy Horse Paris 📍 12 avenue George V (8th) ☎ 01 47 23 32 32 ● reservation@lecrazyhorseparis.com

Lido de Paris 📍 116 bis avenue des Champs-Élysées (8th) ☎ 01 40 76 56 10 ● reservation@lido.fr

Paradis Latin 📍 28 rue du Cardinal Lemoine (5th) ☎ 01 43 25 28 28 ● paradislatin@paradislatin.com

SHOPPING

Shopping is something not to be missed during any stay in Paris. Department stores and shopping centres adapted to disabled people have everything shoppers could wish for.

IN PARIS

Beaugrenelle Paris 📍 12 rue Linois (15th) ☎ 01 53 95 24 00 ● contact@beaugrenelle-paris.com

Bercy Village 📍 Cour Saint-Émilion (12th) ☎ 08 25 16 60 75

Carrousel du Louvre 📍 99 rue de Rivoli (1st) ☎ 01 43 16 47 10

Forum des Halles 📍 101 porte Berger (1st) ☎ 01 44 76 87 08 ● www.forumdeshalles.com (contact form)

Galleries Lafayette 📍 40 bd Haussmann (9th) ☎ 01 42 82 34 56 ● haussmann.gallerieslafayette.com (contact form)

Printemps 📍 64 bd Haussmann (9th) ☎ 01 42 82 50 00 ● www.printemps.com (contact form)

AROUND PARIS

Aéroville 📍 30 rue des Buissons – Roissy Charles-de-Gaulle (95) ● www.aeroville.com (contact form)

La Vallée Village – Chic Outlet Shopping® 📍 3 cours de la Garonne – Serris (77) ☎ 01 60 42 35 00

● lavallee.village@lavallee.village.com

Les Quatre Temps 📍 15 parvis de la Défense – La Défense (92) ☎ 01 47 73 54 44 ● www.les4temps.com (contact form)

One Nation Paris 📍 1 avenue du Président Kennedy – Les Clayes-sous-Bois (78) ☎ 01 72 87 90 11

● www.onenation.fr (contact form)

THEME PARKS, ESCAPE GAME

In and around Paris, the majority of theme parks are accessible to disabled people.

Aquarium de Paris 📍 5 avenue Albert de Mun (16th) ☎ 01 40 69 23 23 ● info@cineaqua.com

Disneyland® Paris 📍 Marne-la-Vallée (77) ☎ 01 60 30 10 20

● <https://idf-my-disneyland.disneylandparis.fr/contactez-nous.html> (contact form)

Parc Astérix 📍 Plailly (60) ☎ 0826 46 66 26 (€0.15/min) ● www.parcasterix.fr (contact form)

Parc zoologique de Paris 📍 Avenue Daumesnil (12th) ☎ 0811 224 122 (€0.06/min) ● pzp@mnhn.fr

Ménagerie du Jardin des Plantes 📍 57 rue Cuvier (5th) ☎ 01 40 79 56 01 ● info-accessibilite@mnhn.fr

Not forgetting live escape games, where players have to escape from a room in a limited period of time, with the help of clues.

Gamescape 📍 17 rue de la Pierre Levée (11th) ☎ 01 77 12 23 62 ● contact@gamescape.fr

CAFES, TEA ROOMS, BARS, CLUBS

Afternoon tea and cakes, a pre-dinner drink, or going out for a drink in a bar or clubbing? Find your perfect spot from amongst the numerous Parisian places to unwind and relax in.

Coffee & Signs (tea room and restaurant, French sign language) 📍 42 rue Rodier (9th) ☎ 06 84 68 42 03

● contact@coffee-signs.com

Colette Water Bar 📍 213 rue Saint-Honoré (1st) ☎ 01 55 35 33 93 ● contact@colette.fr

Hard Rock Café (bar, restaurant) 📍 14 bd Montmartre (9th) ☎ 01 53 24 60 00 ● paris_sales5@hardrock.com

La Bellevilloise (restaurant, concert and exhibition rooms, club) 📍 19-21 rue Boyer (20th)

☎ 01 46 36 07 07 ● resa@labellevilloise.com

Ladurée Champs-Élysées 📍 75 avenue des Champs-Élysées (8th) ☎ 01 40 75 08 75

Ladurée Royale 📍 16 rue Royale (8th) ☎ 01 42 60 21 79

Les 4 éléments (bar) 📍 149 rue Amelot (11th) ☎ 01 47 00 34 11 ● contact@bar4elements.com

(Air space not accessible to people in wheelchairs)

Showcase (club) 📍 Port des Champs-Élysées (8th) ☎ 01 45 61 25 43 ● resa@showcase.fr

FIND
OUT
MORE



To select the place that you wish to go out to, we invite you to use the advanced search option on ● www.parisinfo.com, rubric 'Going out'. Choose the criteria that interest you: location, type of place, services, disability.



— ● MAKING YOUR TRIP EASIER

PARIS TOURIST OFFICE

Come and visit us at the main information centre of the Paris Tourist Office, a stone's throw from the Louvre Museum and the Palais Garnier Opera House! Our tourist information staff are available to give you information and advice and reply to your questions. Ideas for places to visit and entertainment, as well as a range of brochures, including those of transport companies, are available to pick up from the display rack for the disabled public.

Main information centre

📍 25 rue des Pyramides (1st).
 ▶ M° Pyramides, Tuileries, Opéra.
 ☺ Open every day (except 1 May).
 2 May to 31 October: daily 9am to 7pm.
 1 November to 30 April: 10am to 7pm.
 Free Wi-Fi.

Anvers – Montmartre

📍 72 bd de Rochechouart (9th). ☺ Daily: 10am to 6pm, except 1 January, 1 May and 25 December.

Gare de l'Est

📍 Place du 11 Novembre 1918 (10th). ☺ Daily: 8am to 7pm, except Sunday and public holidays.

Gare du Nord

📍 18 rue de Dunkerque (10th). ☺ Daily: 8am to 6pm, except 1 January, 1 May and 25 December.

Paris Rendez-Vous – Paris City Council

📍 29 rue de Rivoli (4th). ☺ Daily, 10am to 7pm, except Sunday.

REQUEST THE SERVICES OF A TRAVEL AGENT

If you would like help in planning your stay in Paris, or, for any specific visit requests, you can call on the services of an inbound travel agency for disabled visitors.

AADSP Voyages 📍 1 placette du 8 mai 1945 – 95490 Vauréal ☎ 01 34 22 02 44 ● contact@aadsp.fr

Access Tourisme Service 📍 24 rue du 11 Novembre – 45130 Charsonville ☎ 02 38 74 28 40

● access.tourisme.service@wanadoo.fr

Be Handi 📍 18 route de Mézières – 41240 Ouzouer-le-Marché ☎ 06 04 53 56 18 ● info@behandi.fr

Yoola 📍 90 rue du Moulin Vert (14th) ☎ 01 83 65 00 40 ● www.yoola.fr (contact form)

RENTAL OF MEDICAL EQUIPMENT

If you wish to rent a wheelchair, a pair of crutches or any other specific equipment during your stay in Paris, you will find a dozen or so suppliers on ● www.parisinfo.com, rubric 'Practical Paris', under the rubric 'Visiting Paris with a disability', including:

Pharmacie Paris – Charonne (English spoken) 📍 136 rue de Charonne (11th) ☎ 01 43 71 09 56

● pharmacieparischaronne@yahoo.fr



If you are French, all you need is a medical prescription to be reimbursed for the cost of renting medical equipment. If you are a European citizen, you must also show your European health insurance card. Visitors from outside the European Union: check to see whether your country has signed a social security agreement with France. If this type of rental service is covered by your personal social security, your expenses will be reimbursed on your return.

FINDING ADAPTED PUBLIC TOILETS

Since 2009, Paris has been renewing its 'sanisettes' (free automatic public toilets). There are now more of them available in tourist areas. Hygienic, safe, comfortable and ecological, more than 400 'sanisettes' are accessible to disabled people. They are adapted for wheelchair users (transfer bar), and they have recorded information and information in braille for blind or sight-impaired people. To locate the sanisettes along your route, enter 'sanisettes' in the search engine of ● www.paris.fr.

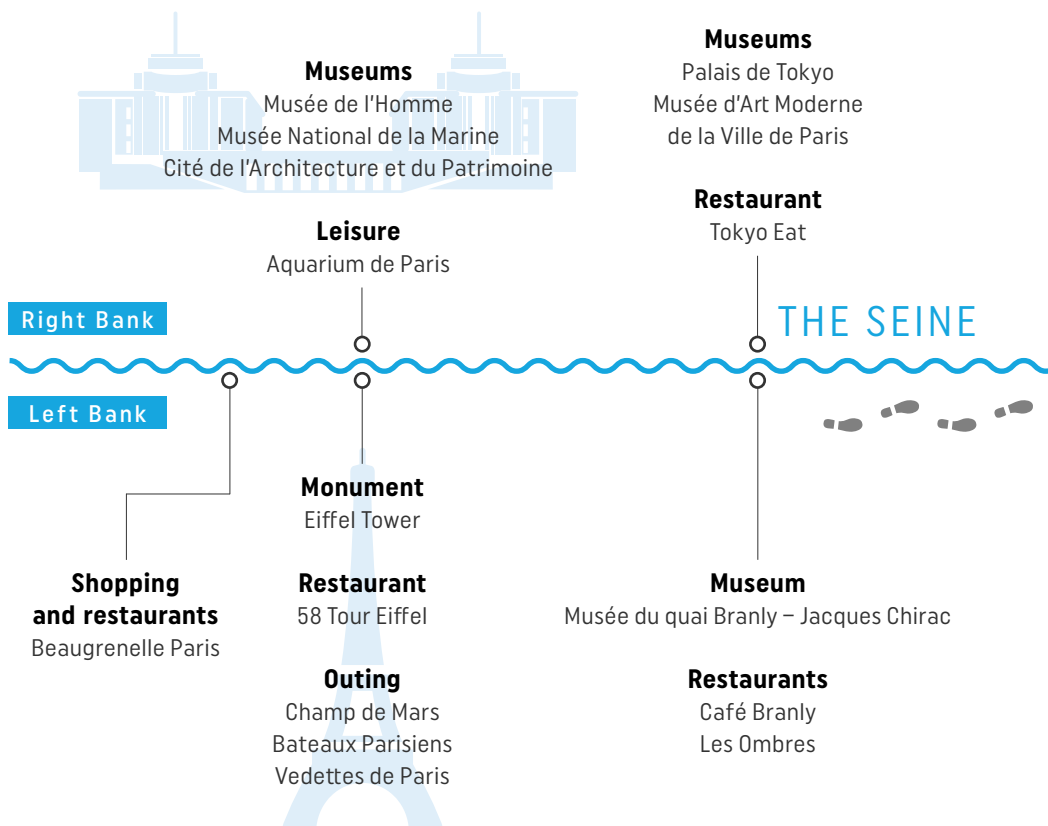
CROSSING ROADS

The pavements at pedestrian crossings are lowered or the road is elevated in order to make it easier for wheelchair users and any other people with equipment on wheels (rollerblades, push-chairs, suitcases, etc.) to cross roads. For blind and sight-impaired people, there are tactile and audio safety features at traffic lights.



● A PROMENADE ALONG THE BANKS OF THE SEINE

Bus line 72 (on this itinerary, stations

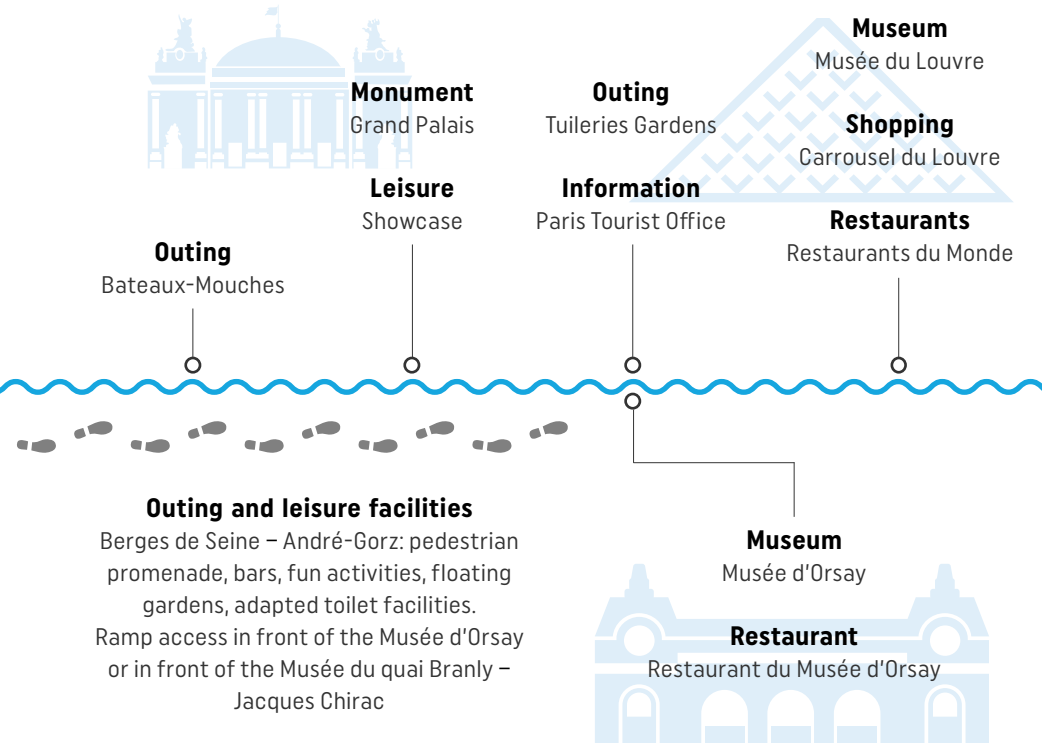


Bus line 42

(on this itinerary, stations 'Dupleix' and 'Tour Eiffel' not accessible)

This itinerary along the Seine will lead you towards some of the finest museums and monuments in Paris, towards parks and gardens to relax in and towards great places to eat at and shop at. To enjoy the proximity of the water, greenery and tranquillity right in the heart of Paris, take the Berges de Seine – André-Gorz riverside promenade. On this 2.3 km stretch, reserved for pedestrians, cyclists, and rollerblade fans, you'll find cafes, floating gardens, fun activities and adapted toilet facilities.

'Pyramides – Tuileries' and 'Louvre – Rivoli' not accessible



Bus line 63

(on this itinerary, station
'Bosquet – Rapp' not accessible)

Bus line 24

Museums, chateaux,
tourist offices, hotels,
restaurants ...



Paris Region
an accessible and welcoming destination



Visitparisregion.com
the official website for Paris Region

Accessible.net
the directory of accessible sites

**VISITPARIS
REGION**

